

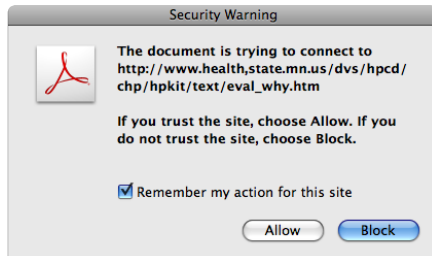
HOW TO USE THIS INTERACTIVE PDF

This PDF is an easy to use document that will allow you to develop a customized plan for your event. The PDF has interactive navigation and editable forms throughout. To use the forms, you will need Adobe Acrobat Reader or Adobe Acrobat Pro. If you do not have either program, you can download them from the link below:

[HTTP://GET.ADOBE.COM/READER/](http://get.adobe.com/reader/) 

NAVIGATION

This manual is divided into four sections and can be navigated from the HOME menu which is located on the footer of each page. Each section can be accessed by clicking on the right side descriptor text on the footer to jump back to the beginning section. Links in the PDF are clickable and will take you to the corresponding website. When you click on a link you may get a warning that looks like this:



This is a block-up legal description from Adobe asking if you trust the site you are going to. Choose Allow to proceed to the website, or choose Block if you wish to decline.

FORMS

There are multiple forms throughout this pdf are intended for you to work through and enter them on your keyboard. You can use the tab key to jump to the next field in the form to navigate faster. You can save the file while you are working on it by going up to the file menu in Acrobat and clicking save (after you have started working on the forms), you can also. You can also print any portion of the pdf that you want.

7. How many other events are competing for volunteers, funding, materials and equipment in your community? How will you resolve this issue?

Enter text here (up to 350 characters long).

Sample Form

HOME

SETTING THE STAGE INTRODUCTION